

## TECHNICAL DATA SHEET

### LESI + LU4TAL IP65-68 / Aga-Led® Type B

VERSION - 19.01.2016

#### STANDARD LUMINAIRE

Reference	LESI+ LU4TAL
Protection Class	IP65-68
Lighting Source	Aga-Led® Type B
Connector	Rigid Loop on B'Light conductor 16mm <sup>2</sup>
Dimensions	89x100mm
Standard Length	200 - 530 - 1025 - 1520 - 2015mm
Length on measure	on request up to 2015mm
Nb Lighting Unit	16 LED/m
Voltage	24V
Power	19.2 W/m
Connecting Cable	One side: 1m Silicone Cable 2x1.5mm <sup>2</sup> - 180°
Grid	Transversal: GTCE



#### FINISH

##### Color Finishing Profil

Standard	Black Powder Coating
On request	Thermo-enameling Powder Coating RAL Color Anodising Polished Aluminium Chrome or Gold Aspect

##### Glass Finishing

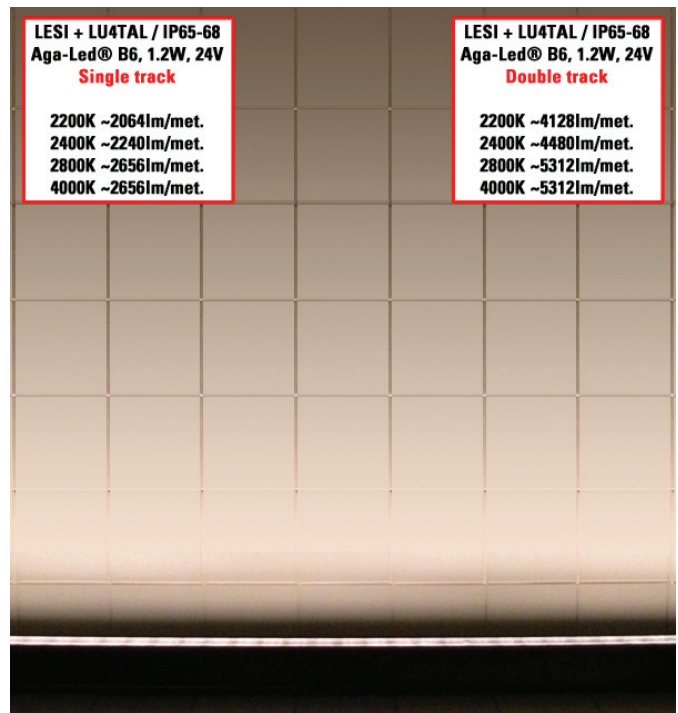
Standard	GL: Clear
On request	Opaline

#### ON REQUEST

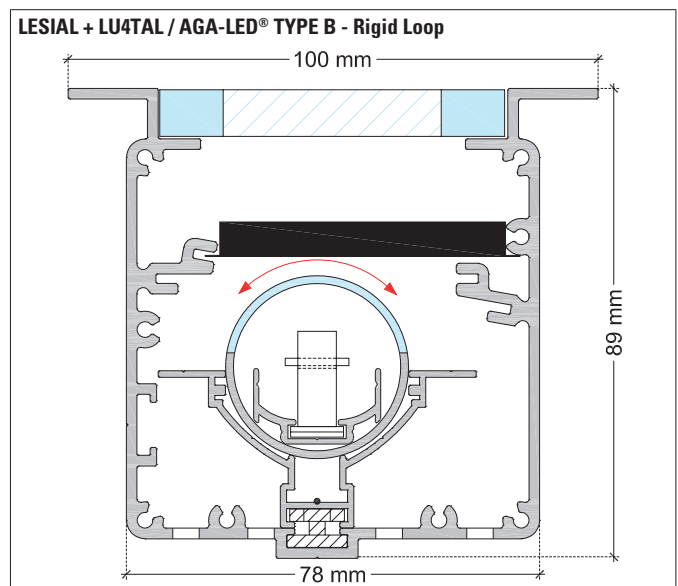
Recessed Box	LESI BOX
Interior Glass	Opaline Glass : VRM / Bluish Glas: VRVE
Connecting Plug	AMS / AF or AMS-E / AF-E
Dimming Option	1-10V, Dali, KNX <i>Ask technical departement for more information</i>

#### LIGHTING SOURCE

Lighting Source	Aga-Led® Type B - Generation 2			
Ref	B2	B3	B4	B6
Voltage	24V	24V	24V	24V
Power	1.2W	0.96W	1.2W	1.2W
Beam Angle	120°	120°	120°	120°
CRI	80	80	80	80
Color Temperature	lm/Unit			
	2200K 44 ~ 74	--	50 ~ 85	76 ~ 129
	2400K 48 ~ 81	58 ~ 97	55 ~ 93	83 ~ 140
	2800K 68 ~ 114	82 ~ 137	66 ~ 111	99 ~ 166
	4000K 68 ~ 114	82 ~ 137	66 ~ 111	99 ~ 166
Lifetime	50'000h			
Working T°	-20°C to +45°C			
Environmental protection	Modified acrylate resin			



Distance from wall: 5cm



#### CERTIFICAT



#### AGABEKOV

## TECHNICAL DATA SHEET LESI BOX FOR LESI+LU4T

VERSION - 15.01.2016

### LESI BOX

Boite inoxydable encastrable pour faciliter l'installation et la protection du luminaire LESI dans le sol.

La boîte contient:

- trous d'évacuation
- 4x16mm trous pour tube électrique

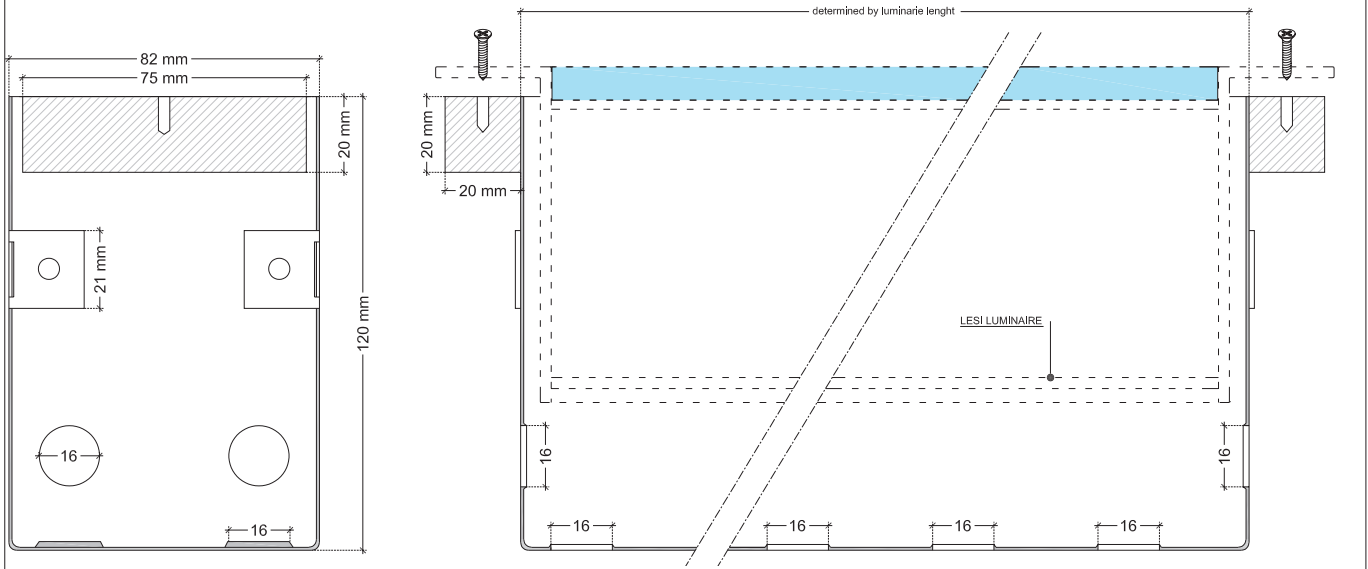
Flush mount stainless steel box for easy installation and protection of LESI luminaire recessed in the ground.

The box is provided with:

- Drain holes
- 4x16mm holes for electrical tube



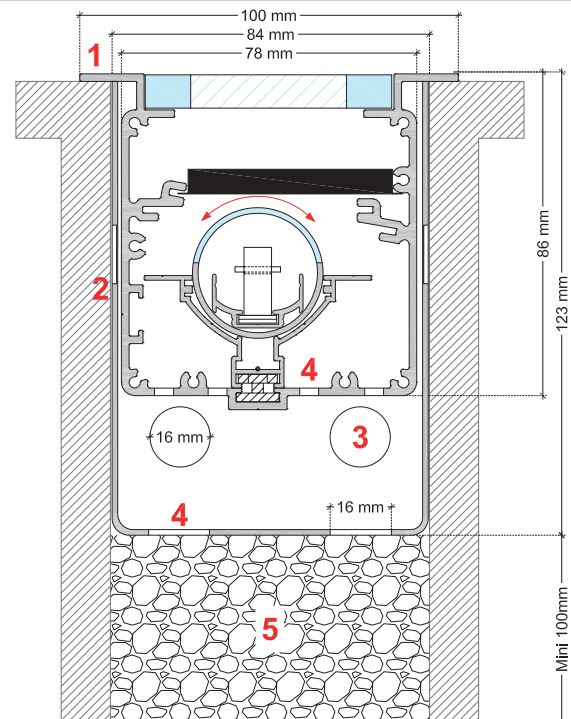
### LESI BOX DIMENSIONS



### LESI BOX - PRECAUTION OF INSTALLATION

**Lors de l'installation dans le sol, il est impératif et essentiel de prévoir un drainage en pierre pour permettre à la condensation de s'évacuer.** Le luminaire ne doit pas être durablement en contact avec des matériaux corrosifs. Les matériaux agressifs peuvent provenir de l'eau du sol et altérer le boîtier. Si la qualité du sol n'est pas connue, il faut réaliser une analyse de ses composants avant l'installation du produit. Certains matériaux agressifs pouvant également attaquer la surface du luminaire, il faut donc limiter l'utilisation de produits de salage des voies publiques aux abords de l'appareil. Des courants de fuite rentrant par l'extérieur et conduits dans le sol par le luminaire, causent des dommages de corrosion. Des contre-mesures appropriées doivent être effectuées.

**When installing the luminaire in the ground, it is important and essential to provide a proper stone drainage so that condensation can drain out.** The luminaire must not permanently have contact with aggressive media. Aggressive media might be washed out of the soil and might corrode the housing of the luminaire. In case of an unknown composite of the soil a soil analysis should be made before installation. Aggressive media that is outgoing from the ground surface might also affect the luminaire. Thus an overuse of de-icing agents in the surroundings should be avoided. Parasite current, occurring from the outside which is conducted by the luminaire into the soil, will cause corrosion damage. Suitable counter measures must be carried out.



**1 : Ground recessed LESI+LU4T luminaire / 2 : Stainless steel LESI BOX / 3 : Holes ø16mm for electrical tube / 4 : Drain holes so that condensation can drain out / 5 : Stone drainage minimum 100mm**

### AGABEKOV



AGABEKOV SA Manufacture 6, ROUTE DE COMPOIS  
CH-1222 VÉSENAZ - GENEVA - SWITZERLAND  
Tel. +41 22 752 47 45 Fax. +41 22 752 37 08  
E - mail: info@agabekov.com



AGABEKOV SA Bureau d'études 6, ROUTE DE COMPOIS  
CH-1222 VÉSENAZ - GENEVA - SWITZERLAND  
Tel. +41 22 752 47 45 Fax. +41 22 752 37 08  
Internet: www.agabekov.com

